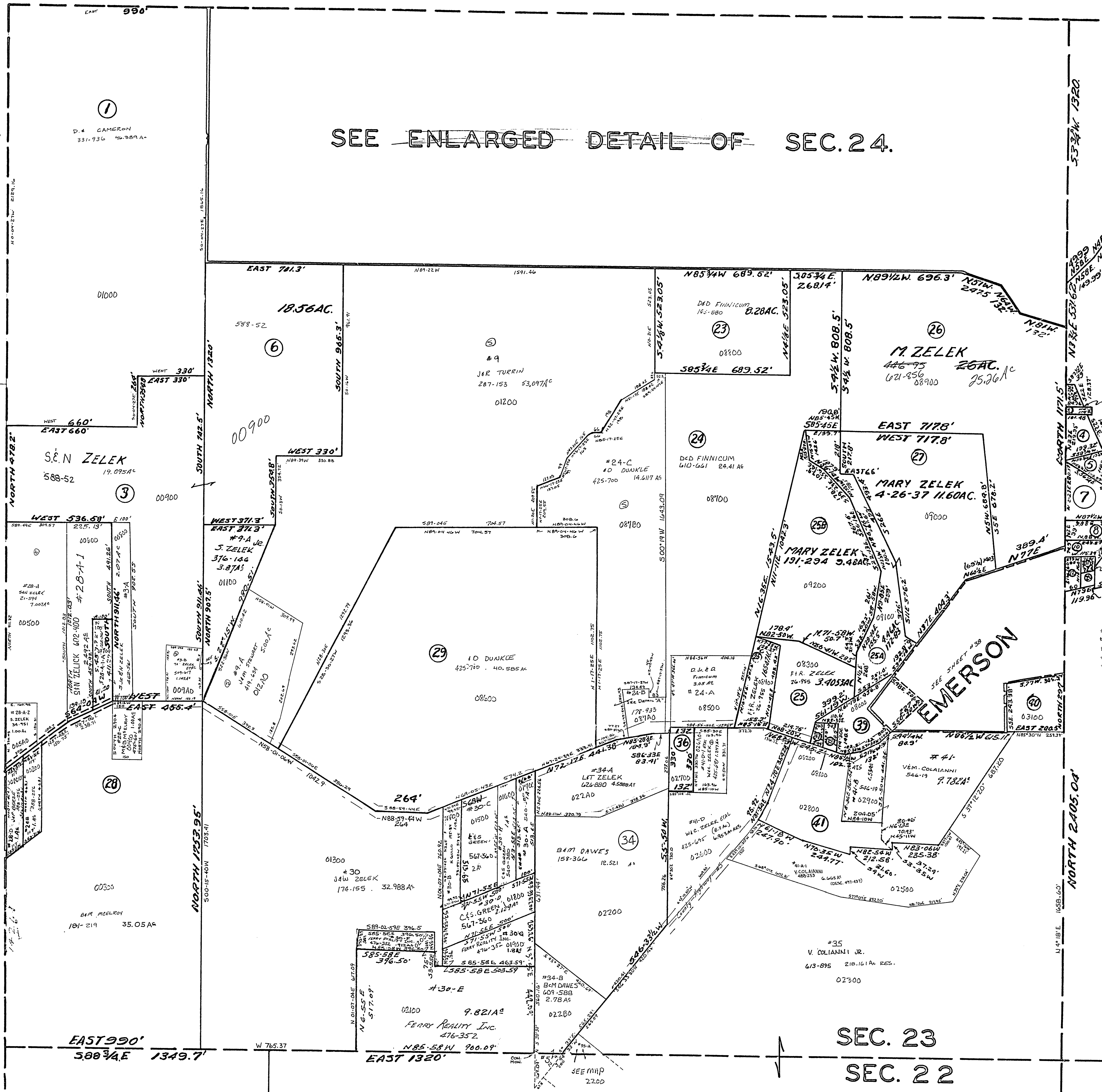


20-2300-

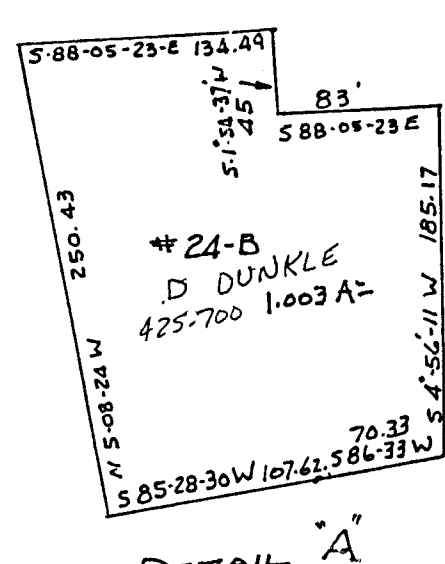
SEE ENLARGED DETAIL OF SEC. 24.

NOTE:
Audiors DEED CAN'T LOCATE

#75	BENJAMIN COAL CO.	604-851	.55A
#76	QUICKER CHURCH	10-142	1.91
#77	EMERSON GRANGE	3-15-25	1.12A
#78	EMERSON GRANGE	3-15-25	2.25A
#79	M. ZELEK	446-95	1.75A
#80	M. ZELEK	446-95	1.75A
#95-A	D.A. BEHEK	697-507	2.652A



#39	M. ZELEK	584-551	1.40A
#41-A	M. ZELEK	582-564	
#20	H. STARR	880-19	1.63A
#38	M.R. ZELEK	356-447	0.25A
#37			0.12A



MT. PLEASANT TWP.
SECTION 23, T.7, R.3.
SCALE: 1" = 200'